

# 2009 Georgia Data Summary:

## Suicide

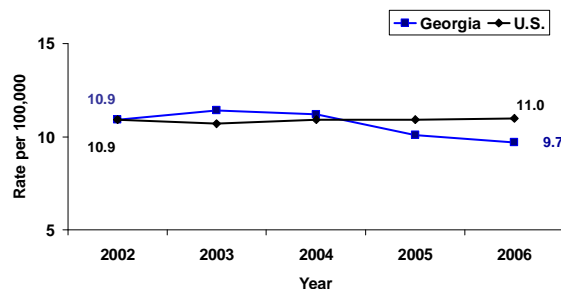


**Suicide is the eleventh leading cause of death and the leading cause of violence-related death in Georgia.<sup>1</sup> The number of suicides is about 40% greater than the number of homicides each year.<sup>5</sup>**

### How many Georgians die of suicide?<sup>5</sup>

- From 2002-2006, 4,611 Georgians completed suicide, an average of 922 deaths per year
- There were 26,202 years of potential life lost due to suicide in 2006, making it the 6<sup>th</sup> largest contributor to premature death (death before 75 years of age)

Age-Adjusted Suicide Rates, Georgia and the U.S., 2002-2006



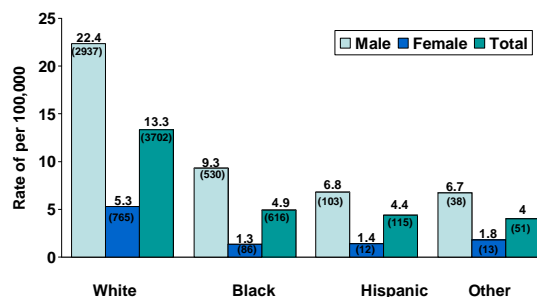
### What are common suicide methods and circumstances?<sup>4</sup>

- The most common method in completed suicides in 2006 was use of a firearm (65%); the second most common method was hanging, strangulation, or suffocation (19%)
- The most commonly reported suicide circumstance in 2006 was experiencing a crisis in the past two weeks (34%); the second most common circumstance was having a current mental health problem (33%)

### Who is at risk?<sup>5</sup>

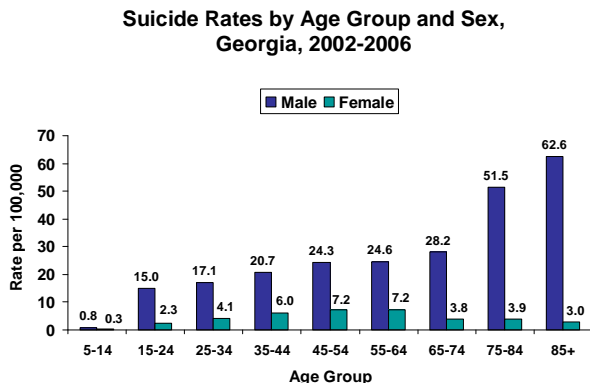
- White males had the highest number (2,937) and rate (22.4 per 100,000) of suicide between 2002-2006
- White females had the second highest number (765) and black males had the second highest rate (9.3 per 100,000) of suicide between 2002-2006

Age-Adjusted Suicide Rates by Race/Ethnicity and Sex, Georgia, 2002-2006



The number in parentheses at the top of each bar is the number on which the rate in that group is based.

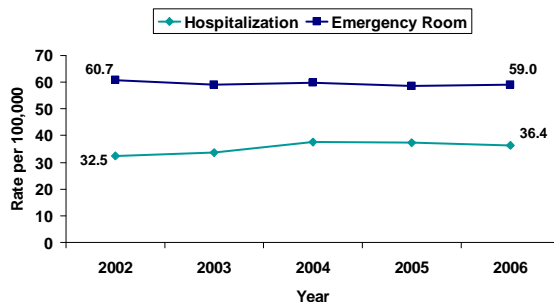
- Among males, the rates of suicide were highest in the older age groups during 2002-2006
- Males (727) and females (214) aged 35-44 years and males (717) and females (224) aged 45-54 years had the highest number of suicides during 2002-2006



### What are the facts about suicide attempts?<sup>2, 3</sup>

- From 2002-2006, there were 16,160 hospitalizations for suicide attempts, an average of 3,232 hospitalizations per year, resulting in an average of 6,427 hospital days and \$20 million in hospital charges per year
- Persons aged 20-24 years (59.1 per 100,000) and 35-44 years (61.0 per 100,000) had the highest rates of hospitalization after suicide attempts in 2006
- From 2002-2006, Georgians had 27,483 emergency room visits for suicide attempts, resulting in an average of 5,497 ER visits per year and \$11 million per year in ER charges
- Persons aged 15-19 years (171.8 per 100,000) and 20-24 years (128.6 per 100,000) had the highest rates of ER visits for suicide attempts in 2006

**Age-Adjusted Hospitalization and Emergency Room  
Visit Rates: Suicide Attempts, Georgia, 2002-2006**



**Data sources:** 1. CDC Web-based Injury Statistics Query and Reporting System (WISQARS)  
 2. Georgia Emergency Room Visit Data (2002-2006)  
 3. Georgia Hospital Discharge Data (2002-2006)  
 4. Georgia Violent Death Reporting System (2006)  
 5. Georgia Vital Records Data (2002-2006)

**Date updated:** February 2009

**Publication number:** DPH.09 366HW

Visit <http://www.health.state.ga.us/epi/cdiee/injury.asp> for more information on suicide in Georgia.